

**Baler Avermann, type AVOS 1410 BS-22/50, 70 t press force, year of construction 2023, only 1,851 pump hours, drive 22 kW, with special press ram**



The entire baling line consisting of the Avermann baler, type AVOS 1410 BS-22/50, incl. wire drawing stations and bale chute, the Avermann chain belt conveyor type KGF GB 1500 and the non-contact personal protection system BOREMA APSS IBOR 22 is to be sold as a package. Dismantling and loading is the responsibility of the buyer.

**Technical data baler:**

Manufacturer Avermann Maschinenfabrik GmbH & Co. KG, Germany

Type AVOS 1410 BS-22/50

Year of construction 2023

Pump operation hours 1,851 hours, as of July 24

Press power main press 70 t (a 70 tonne hydraulic cylinder is installed, special equipment)

Specific press force 90,9 N/cm<sup>2</sup> (a 70 tonne hydraulic cylinder is installed, special equipment)

Feed channel 1,400 x 1,000 mm

Theoretic cycle time 13 sec

Theoretic throughput capacity 266 m<sup>3</sup>/h

Bale size 1,100 x 750 (w x h), the length is variable

Drive power 22 kW

Connected load 65 kW

Tying system 4-fold, vertical, fully automatic

Throughput capacity at a

bulk weight of 30 kg/cbm approx. 5,5 t/h

bulk weight of 50 kg/cbm approx. 7,5 t/h

bulk weight of 100 kg/cbm approx. 9,7 t/h

Bale weight with a bale length of approx. 1.2 m up to 500 kg, depends on material

SPS controller Siemens S7-1500

Operating panel Schneider Harmony

Baler dimensions built up 8,610 x 2,400 x 3,835 mm (l x w x h)

Transport weight baler approx. 17 t

**Special equipment:**

Wear-resistant floor made of HARDOX steel

## **Baler Avermann, type AVOS 1410 BS-22/50, 70 t press force, year of construction 2023, only 1,851 pump hours, drive 22 kW, with special press ram**

Larger main hydraulic cylinder with 70 tonnes of pressing force  
Special press ram for pressing loose bulk materials with small grain sizes  
OptiCut XS system for lower cutting forces and higher throughput rates  
Special pressing piston for pressing "difficult" materials

### **Technical data for the conveyor belt:**

Manufacturer Avermann Maschinenfabrik GmbH & Co. KG, Deutschland  
Type KGF GB 1500  
Year of construction 2023  
Drive power 4.0 kW  
Belt speed approx. 0.3 m/second  
Length feeding conveyor 2,679 mm  
Length elevating conveyor 6,866 mm  
Length goose neck 1,272 mm  
Grade 35°  
Effecting width 1,400 mm  
Side wall height 800 mm  
Carrier height 50 mm  
Carrier distance 750 mm  
Belt quality EP 400/3, 3:1 (DIN quality N)  
Overall height 4,515 mm  
Overall transport dimensions 11,148 x 2,502 mm (l x w)

### **Technical data on the non-contact personal protection system:**

Manufacturer BOREMA Umwelttechnik AG, Switzerland  
Type APSS iBOR 22  
Year of construction 2023

### **Condition of the press system:**

The entire system is in very good condition due to the short operating time of only 1,851 pump hours and the processing of only paper, cardboard and film.

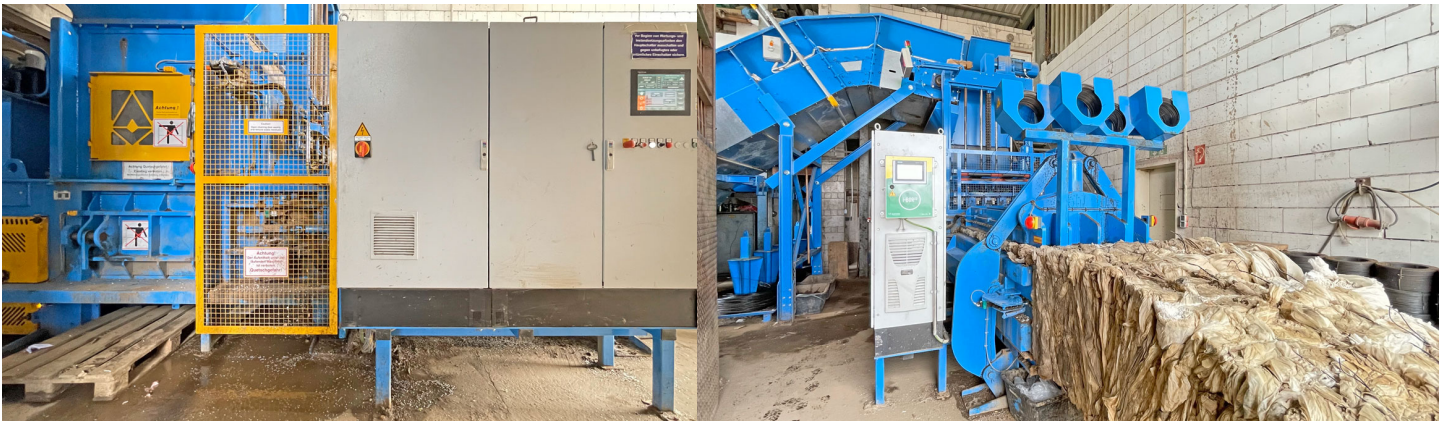
### **Scope of delivery:**

Avermann baler, type AVOS 1410 BS-22/50, incl. wire drawing stations and bale chute  
Avermann conveyor belt, type KGF GB 1500  
BOREMA personal protection system, type APSS iBOR 22

### **Comments:**

The documentation (Manual, CE-declaration, electr./hydr.-drawings), are completely available.  
Inspections are possible after agreement. We will not assume liability for the given technical data and possible errors.

**Baler Avermann, type AVOS 1410 BS-22/50, 70 t press force, year of construction 2023, only 1,851 pump hours, drive 22 kW, with special press ram**



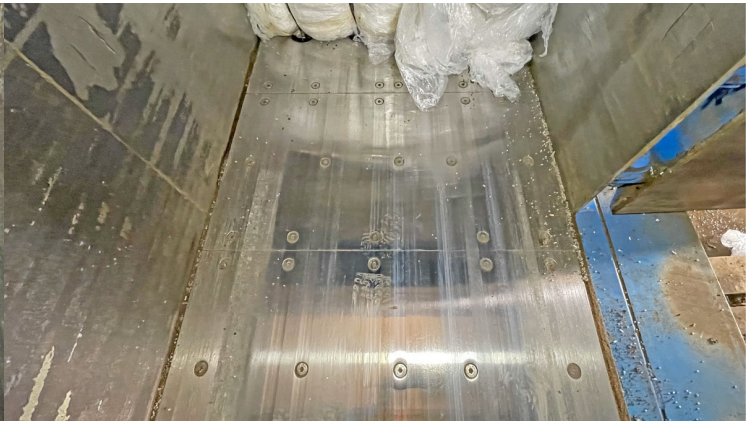
**Baler Avermann, type AVOS 1410 BS-22/50, 70 t press force, year of construction 2023, only 1,851 pump hours, drive 22 kW, with special press ram**



**Baler Avermann, type AVOS 1410 BS-22/50, 70 t press force, year of construction 2023, only 1,851 pump hours, drive 22 kW, with special press ram**



**Baler Avermann, type AVOS 1410 BS-22/50, 70 t press force, year of construction 2023, only 1,851 pump hours, drive 22 kW, with special press ram**



**Baler Avermann, type AVOS 1410 BS-22/50, 70 t press force, year of construction 2023, only 1,851 pump hours, drive 22 kW, with special press ram**

