

**Single-shaft shredder Gross, type GAZ 182, yoc 2015, operating hours 1,929 hours, drive power 55 kW, 100 cutting crowns 40 x 40 mm**



**Technical data Single-shaft shredder with turbo coupling and discharge belt, incl. magnetic drum at the end of the belt**

Manufacturer Gross Apparatebau GmbH, Germany

Type GAZ 182 V-Rotor

Year of construction 2015

Operating hours 1,929 hours, as of June 24

Drive power 55 kW

Power consumption 130 A

Rotor speed 88 rpm

Number of blades 100 pieces

Knife size 40 x 40 mm

Rotor diameter 368 mm

Inlet cross-section 1500 x 1800 mm (l x w)

Feed hopper dimensions 2750 x 3600 mm (l x w)

Weight 6.5 tonnes

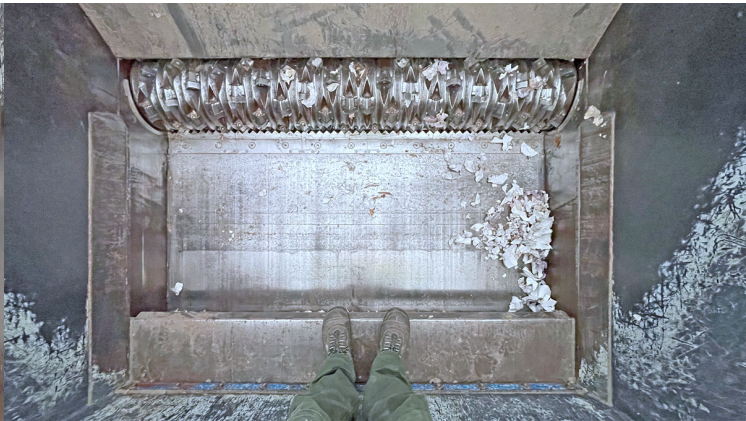
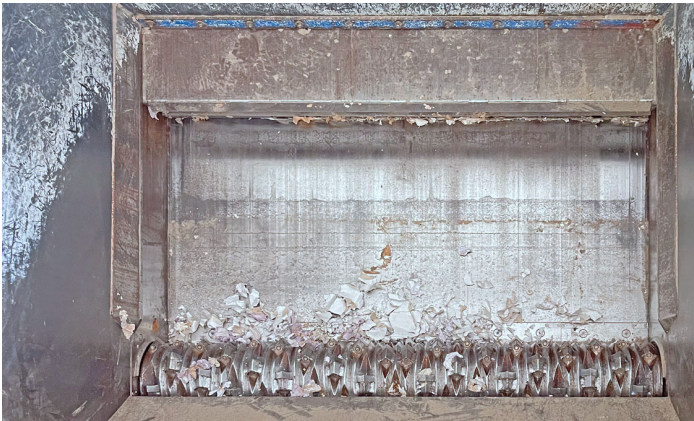
**Comments:**

The documentation (Manual, CE-declaration, electr./hydr.-drawings), are completely available. Inspections are possible after agreement. We will not assume liability for the given technical data and possible errors.

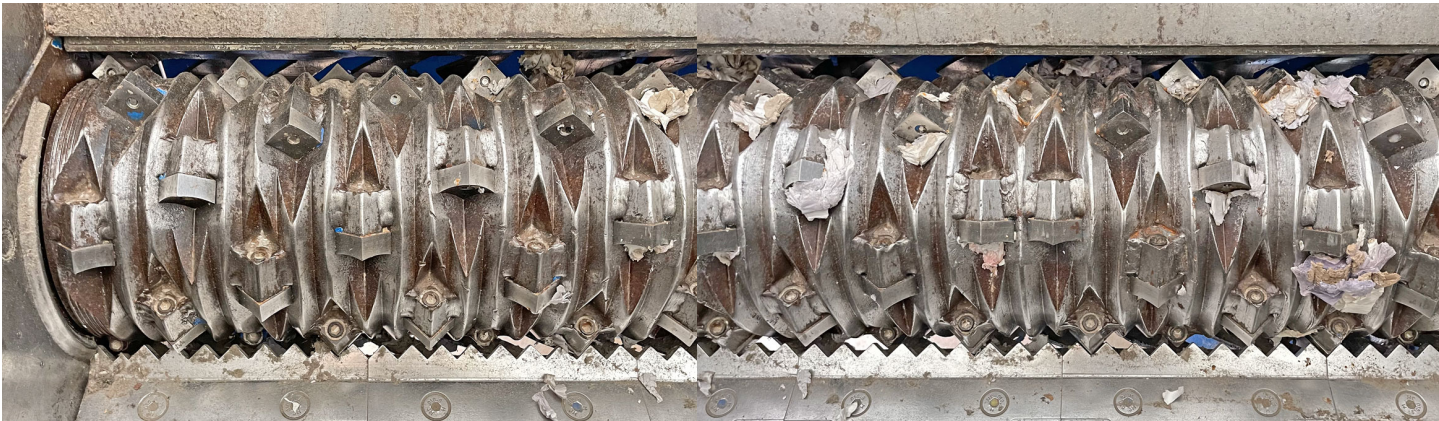
**Single-shaft shredder Gross, type GAZ 182, yoc 2015, operating hours 1,929 hours, drive power 55 kW, 100 cutting crowns 40 x 40 mm**



Single-shaft shredder Gross, type GAZ 182, yoc 2015, operating hours 1,929 hours, drive power 55 kW, 100 cutting crowns 40 x 40 mm



Single-shaft shredder Gross, type GAZ 182, yoc 2015, operating hours 1,929 hours, drive power 55 kW, 100 cutting crowns 40 x 40 mm



Single-shaft shredder Gross, type GAZ 182, yoc 2015, operating hours 1,929 hours, drive power 55 kW, 100 cutting crowns 40 x 40 mm

