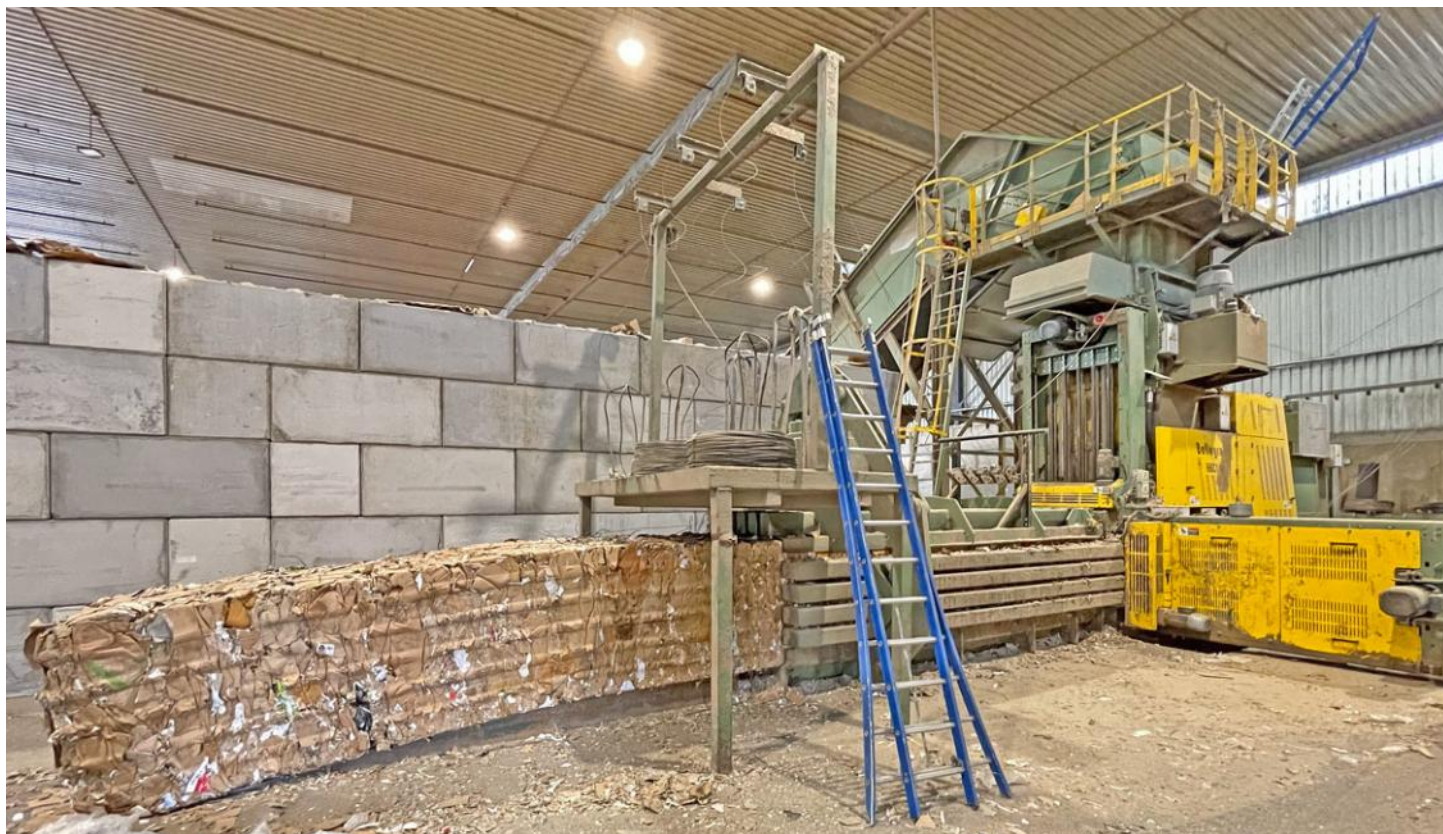


**Baler Bollegraaf, type HBC 140 K, 140 t pressing force, yoc 2012, only 18,593 operating hours, with 10-fold cross tying system and conveyors**



The press is currently in operation and is to be replaced by a new machine in the first quarter of 2025. Inspections are possible after agreement.

**Technical data baler:**

Manufacturer Bollegraaf

Typ HBC 140 K

Year of construction 2012

Working hours 18.593 hours, stand September 2024

Press power main press 140 tons

Press power of pre-press 70 tons

Feed channel 1,600 x 1,100 mm

Capacity per cycle time 4,34 m<sup>3</sup>

Theoretic cycle time 16 sec.

Bale size 1,100 x 1,100 mm

Driving motor 2 x 75 kW

Connected load 248 kW

Full load current 470 A

Tying system 5-fold vertical, fully automated

Throughput rate at a

bulk weight of 30 kg/cbm approx. 30 tons/h

bulk weight of 50 kg/cbm approx. 46 tons/h

bulk weight of 100 kg/cbm approx. 82 tons/h

Bale weight 800 up to 1300 kg, depends on material and bale length

SPS controller Telemecanique TSX Micro

Operating panel Schneider MAGELIS Touch

Baler dimensions built up with hopper 13,200 x 2,750 x 7,344 mm (l x w x h)

Transport dimensions only baler 13.200 x 2.750 x 3.450 mm (l x w x h)

Machine weight baler approx. 47 tons

**Special equipment:**

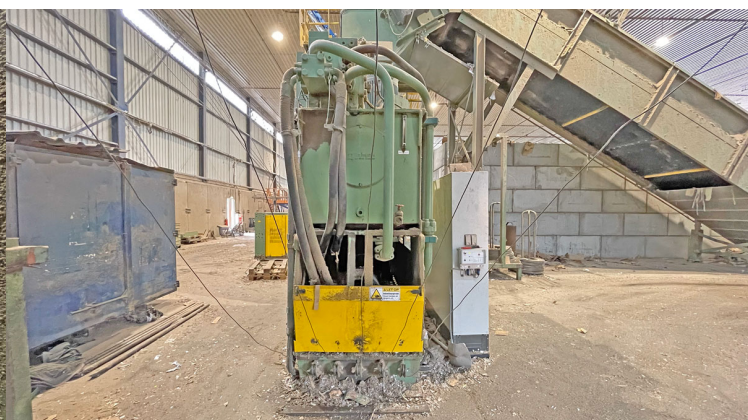
**Baler Bollegraaf, type HBC 140 K, 140 t pressing force, yoc 2012, only 18,593 operating hours, with 10-fold cross tying system and conveyors**

2-flap pre-compressor for large cardboard boxes and octatainers  
Wirbulator for magazines and books

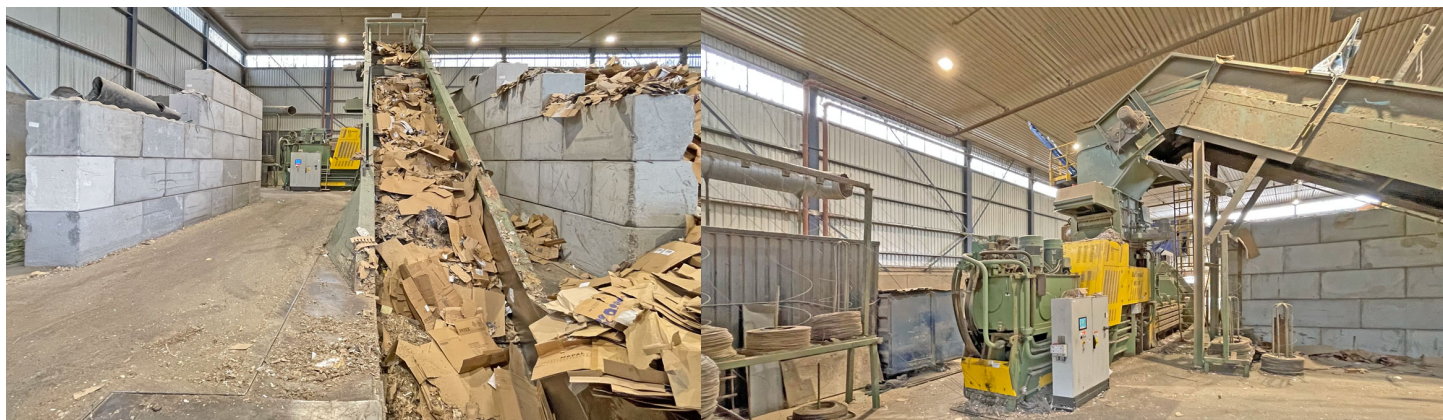
**Comments:**

The press is currently in operation and is to be replaced by a new machine in the first quarter of 2025. Inspections are possible after agreement. We will not assume liability for the given technical data and possible errors.

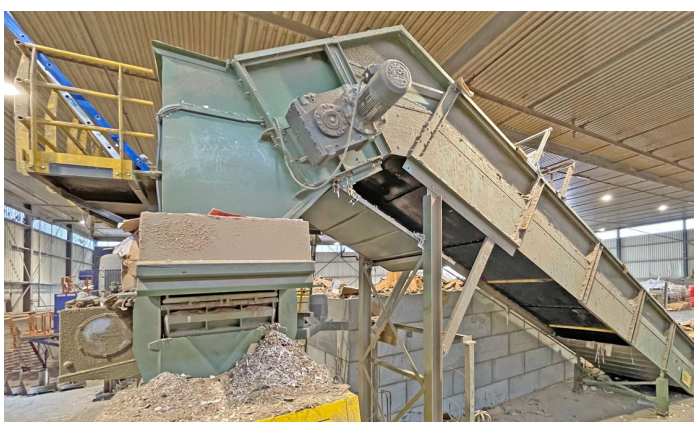
**Baler Bollegraaf, type HBC 140 K, 140 t pressing force, yoc 2012, only 18,593 operating hours, with 10-fold cross tying system and conveyors**



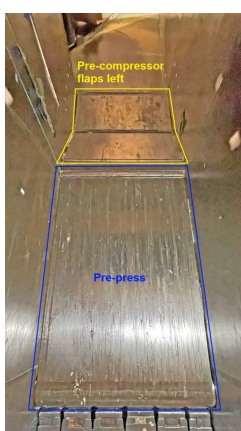
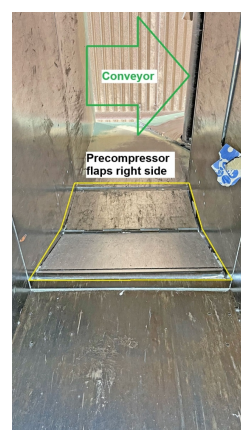
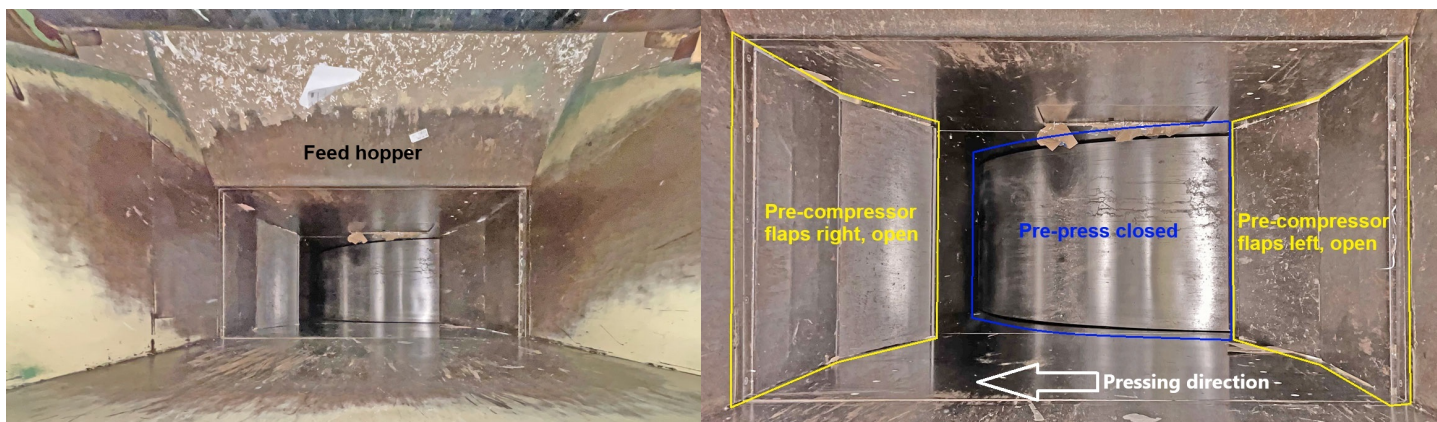
**Baler Bollegraaf, type HBC 140 K, 140 t pressing force, yoc 2012, only 18,593 operating hours, with 10-fold cross tying system and conveyors**



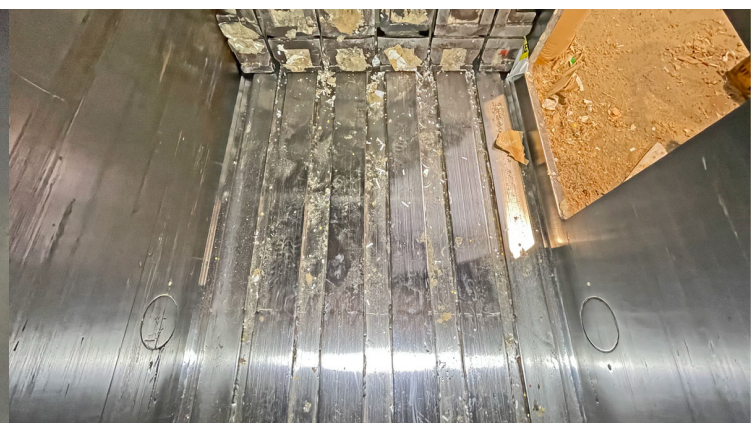
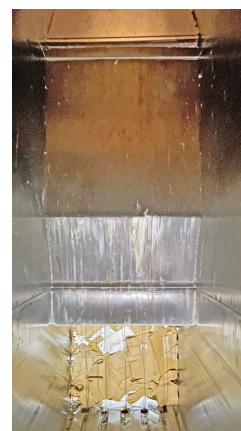
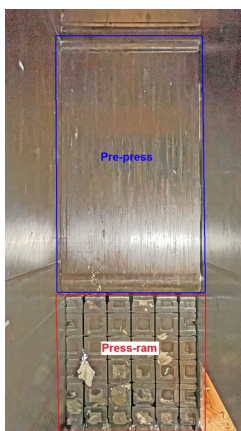
**Baler Bollegraaf, type HBC 140 K, 140 t pressing force, yoc 2012, only 18,593 operating hours, with 10-fold cross tying system and conveyors**



**Baler Bollegraaf, type HBC 140 K, 140 t pressing force, yoc 2012, only 18,593 operating hours, with 10-fold cross tying system and conveyors**



**Baler Bollegraaf, type HBC 140 K, 140 t pressing force, yoc 2012, only 18,593 operating hours, with 10-fold cross tying system and conveyors**

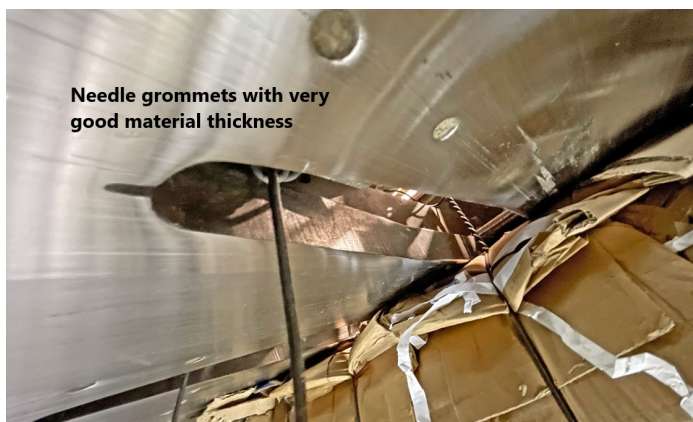


**Baler Bollegraaf, type HBC 140 K, 140 t pressing force, yoc 2012, only 18,593 operating hours, with 10-fold cross tying system and conveyors**

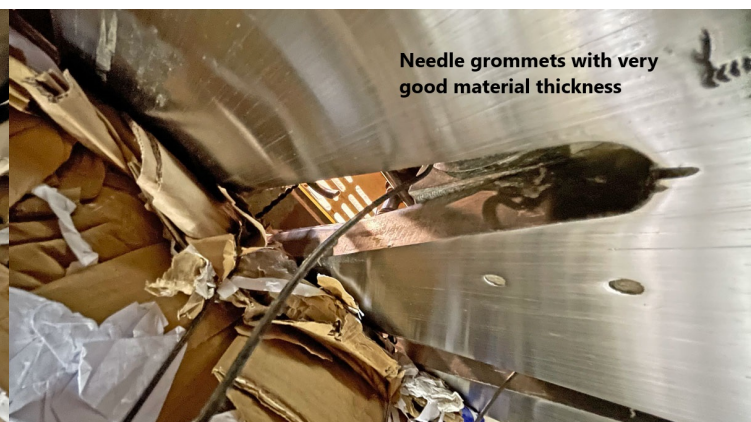




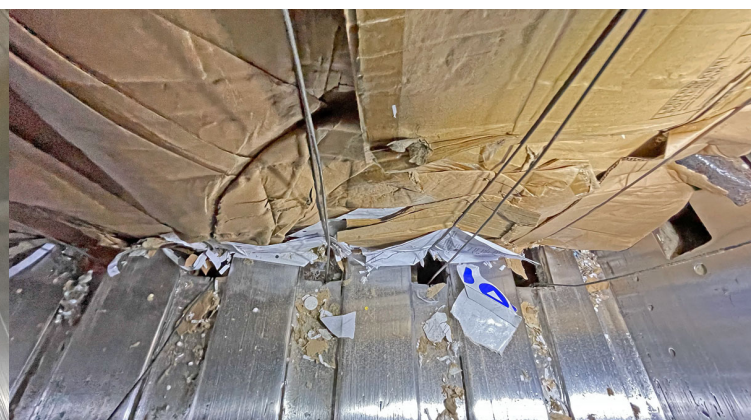
**Baler Bollegraaf, type HBC 140 K, 140 t pressing force, yoc 2012, only 18,593 operating hours, with 10-fold cross tying system and conveyors**



Needle grommets with very good material thickness

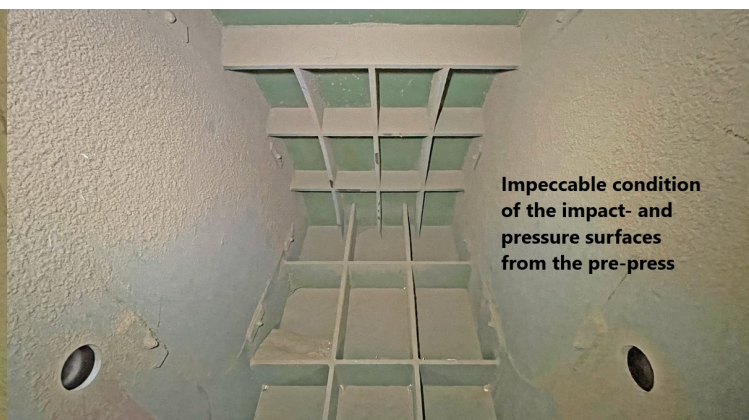
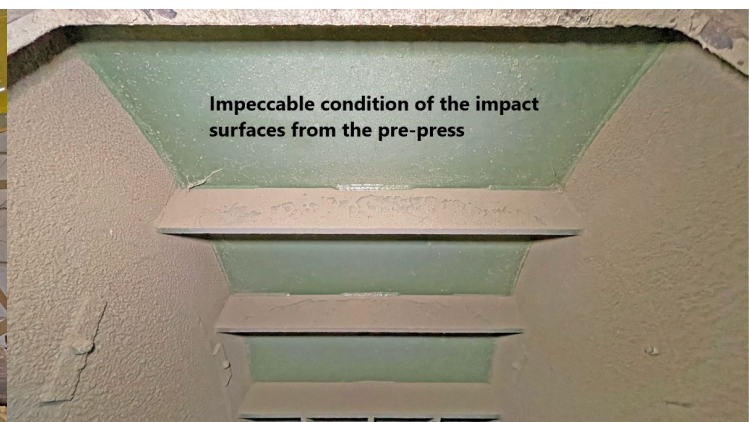


Needle grommets with very good material thickness

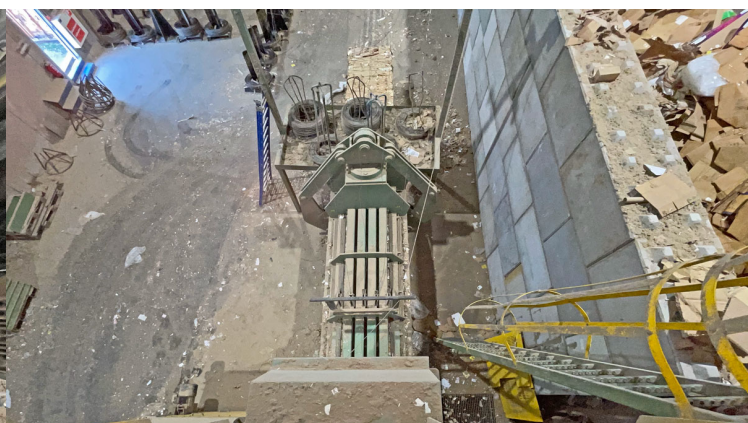
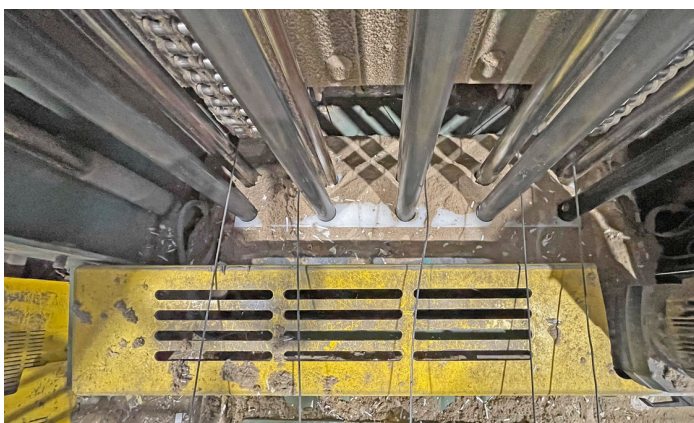
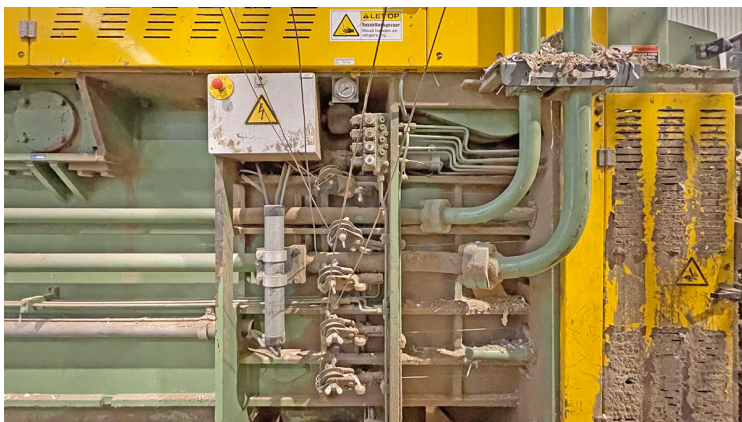


The main hydraulic cylinder is in good condition and tight

**Baler Bollegraaf, type HBC 140 K, 140 t pressing force, yoc 2012, only 18,593 operating hours, with 10-fold cross tying system and conveyors**



**Baler Bollegraaf, type HBC 140 K, 140 t pressing force, yoc 2012, only 18,593 operating hours, with 10-fold cross tying system and conveyors**



**Baler Bollegraaf, type HBC 140 K, 140 t pressing force, yoc 2012, only 18,593 operating hours, with 10-fold cross tying system and conveyors**



**Baler Bollegraaf, type HBC 140 K, 140 t pressing force, yoc 2012, only 18,593 operating hours, with 10-fold cross tying system and conveyors**

