

**Sorting plant, yoc 2009, extension 2015, capacity of 25,000 t/year, with TiTech Autosort 4, 10 sorting places, 150 t baler , with container loading station**



For sale is a complete sorting plant for deinking paper, which can also be used for other materials.

**Overview of the equipment of a sorting plant, year of construction 2009, extension 2015, with a sorting capacity of 25,000 t/year**

For sale is a complete sorting plant for deinking paper, which can also be used for other materials.

The plant consists of the following components:

- 1 piece feeding / dosing bunker with hydraulic moving floor and dosing drum, manufacturer Hartner, type Storage HAT
- 1 piece 3-deck ballistic separator, manufacturer Hartner, type Paper Sort
- 2 pieces overband magnetic separators, manufacturer IFE, type MEQL 1401 S-PS
- 2 pieces cascade screens (vibrating screens), manufacturer IFE, type SM 2400 x 5000 F - UW30
- 2 pieces TiTech Autosort, manufacturer TOMRA Sorting GmbH, type TITECH AutoSort 4 (NIR1-VIS) (S-2800) (X-L), incl. accelerating belts
- 1 piece sorting cabin with filter system, air-conditioned (heated), with 3 sorting belts and 10 sorting stations
- 1 piece ventilation system for the sorting plant with 17,600 m<sup>3</sup>/hour, manufacturer VTS Ventus, type VS-120-R-H/S
- 5 pieces bunker belts for the storage of the individual sorting fractions
- 1 piece semi-automatic truck loading station for walking floor or container trucks
- 1 piece swivel distributor conveyor for stockpiling material as piles
- 1 piece baling press, 150 t pressing force, manufacturer Europress, type EP5 150 V5
- Miscellaneous conveyor technology consisting of chain belt and sliding belt conveyors
- 1 piece dedusting system with backwash function for the filter cartridges, manufacturer Impact Air Systems Ltd.

**Remark:**

The plant is located in Germany, is still fully assembled, connected to electricity and could be inspected in operation (without material input) if required. The sale of the plant is ex location, Germany. The dismantling and loading of the entire plant as well as the broom-clean handover of the hall is at the risk and expense of the buyer. During dismantling, the owner can sporadically

## **Sorting plant, yoc 2009, extension 2015, capacity of 25,000 t/year, with TiTech Autosort 4, 10 sorting places, 150 t baler , with container loading station**

provide logistical support with forklift trucks, wheel loaders and excavators.

The bid of the prospective buyer shall be submitted for the entire plant or individual components. This bid always includes the dismantling of the machines and equipment as well as their loading, removal and broom-clean handover of the hall.

Technical documentation for the plant and the components (operating instructions, CE declaration, electrical and hydraulic circuit diagrams) are available exclusively in German.

An inspection of the plant is possible after sending the complete company data ("self-disclosure") of the prospective buyer and a subsequent credit check by arrangement.

We accept no liability for the technical details or any errors.

Below you will find more detailed information on the individual machines / components.

### **Technical data Dosing hopper with hydraulic moving floor and dosing drum:**

Manufacturer Hartner Maschinenbau GmbH & Co. KG, Germany

Type Storage HT

Year of construction 2009

Control Siemens Logo

Drive power moving floor hydraulics 7.5 kW, 100 l hydraulic oil tank

Moving floor conveying speed adjustable, from min. 0.007 m/minute to max. 0.363 m/minute

Throughput adjustable, from min. 0.15 t/hour up to 8.23 t/hour **ATTENTION related to a material bulk density of 0.1 t/m<sup>3</sup>!**

The effective throughput rate for mixed paper varies between 15 t/hour and 25 t/hour, depending on the quality of the input material.

Drive power of metering drum 4 kW

Dimensions according to overview plan 13,100 x 3,030 mm (l x w)

### **Technical data 3-deck ballistic separator:**

Manufacturer Hartner Maschinenbau GmbH & Co. KG, Germany

Type Paper-Sort

Year of construction 2009

Angle of inclination 15

### **Functional description:**

Screening is carried out according to the principle of size sorting. Due to the screen opening and rotation speed can be adjusted to screen out cardboard as well as other impurities.

### **Technical data overband magnetic separator:**

Manufacturer IFE Aufbereitungstechnik GmbH, Austria

Type MEQL 1401 S-PS

Year of manufacture 2009

Motor power 4 kW

Magnetic power 6,06 kW

Conveyor belt width 1,400 mm

Discharge speed 1.8 m/second

Dimensions 3,086 x 2,238 x 946 mm (l x w x h)

Weight approx. 4,950 kg

## Sorting plant, yoc 2009, extension 2015, capacity of 25,000 t/year, with TiTech Autosort 4, 10 sorting places, 150 t baler , with container loading station

### Technical data cascade screens (vibrating waste screens):

Manufacturer IFE Aufbereitungstechnik GmbH, Austria  
Type SM 2400 x 5000 F - UW30  
Year of construction 2009  
Drive motor 22 kW  
Rated current 43 A  
Screen dimensions 5,000 x 2,400 mm (l x w)  
Swing width max. 18.5 mm  
Weight approx. 6,600 kg

### Possible applications:

The waste screen is suitable for use in plants for sorting household waste, commercial and industrial waste, paper and cardboard, scrap metal and electrical waste. Blockage-free screening with the most difficult feed materials, with high throughput capacity, no pigtail formation with oversize particles, loosened oversize particle discharge over the entire screen width and no downtimes for screen cleaning are the greatest advantages of this plant technology.

### Remark:

The sieve plates under the sieve bars have been replaced over time by steel plates without a sieve function for use in the paper sorting system. However, the steel plates can be dismantled again and replaced with sieve plates.

### Technical data TiTech Autosorts, two pieces:

Manufacturer TOMRA Sorting GmbH, Germany  
Type TITECH AutoSort 4 (NIR1-VIS) (S-2800) (X-L)  
Year of manufacture 2015  
Operating hours 20,619 and 21,729 hours  
Working width 2800 mm  
Rated power 3.68 kW  
Compressed air inlet pressure 8.5 to 10 bar  
Working pressure 8 bar  
Flushing pressure 0.1 to 2 bar

### Remark:

Depending on the sensor equipment, the machine can be used for sorting of:

- DEINKING fraction
- Polymers such as PE, PP, PS, PET, EPS and ABS
- Sorting PET by colour
- Sorting PE by colour
- Removal of mixed paper from mixed feed streams
- Production of an RDF fraction
- Separation of organic and inorganic materials

### System description:

The AUTOSORT 4 separates material on a fast-moving conveyor belt. The advanced light detector and software allow the user to specify the desired sorting tasks simply by making entries on the control panel of the control unit or in a central control room. The conveyor belt must run at a constant speed to ensure that the air jet impulse is applied to the object to be separated at the correct time. The material on the conveyor is analysed and the scanner unit identifies the material to be sorted out. The fed material must be evenly distributed over the entire width of the conveyor

## **Sorting plant, yoc 2009, extension 2015, capacity of 25,000 t/year, with TiTech Autosort 4, 10 sorting places, 150 t baler , with container loading station**

belt. To ensure good separation results, it is extremely important that there is only one layer of the material to be sorted on the conveyor belt. The desired product(s) is/are separated from the waste by a series of valves on the valve block / nozzle bar by means of a jet of compressed air mounted at the end of the conveyor belt.

### **Scope of delivery:**

2 pieces control units TITECH AutoSort 4 (NIR1-VIS) (S-2800) (X-L)  
2 scanner units  
2 pieces valve blocks with nozzle bar  
2 pieces housings with adjustable separating apexes  
2 pieces acceleration belts

### **Technical data baler:**

Manufacturer Europress Umwelttechnik GmbH, Germany  
Type EP5 150 V5  
Year of construction 2015  
Operating hours 19,173 hours  
Number of pressed bales 282,961 bales  
Number of press strokes from the press ram 1,895,112 press strokes  
Pressing force of main press 150 t  
Specific pressing force 181.8 N/cm<sup>2</sup>  
Dimensions of feed chute 1,000 x 2,000 mm (w x l)  
Bale dimensions 750 x 1,100 mm (h x w), length variable  
Drive power 2 x 55 kW + 15 kW + 2 x 0.75 kW  
Rated current 230 A  
Cable cross-section supply 120 mm<sup>2</sup>  
Tying 5-fold vertical, fully automatic  
Hydraulic oil tank capacity 4,300 l  
PLC control Siemens S7 / ET200S  
Transport weight press 35,800 kg

### **Technical data of the ventilation system for the sorting cabin:**

Manufacturer VTS Ventus, Poland  
Type VS-120-R-H/S  
Min. air capacity 5,815 m<sup>3</sup>/hour  
Max. Air flow rate 17,610 m<sup>3</sup>/hour  
Connected load 108 kW  
Static pressure 837 Pa  
Stand-by pressure 600 Pa  
Filter designation VS 120 B.FLT F5, type EU5  
Filter size 592 x 287 mm

### **Technical data dedusting unit with backwash function for the filter cartridge:**

Manufacturer Impact Air Systems Ltd, Great Britain  
Type Dedusting unit  
Year of manufacture 2009  
Drive power 18.5 / 3 kW  
Filter unit Gold Series Reverse Jet Cartridge

### **Remarks on the overall layout:**

Technical documentation for the plant and the components (operating instructions, CE declaration,

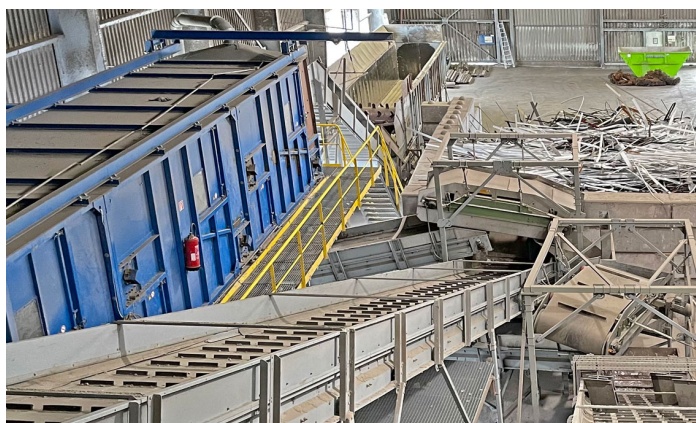
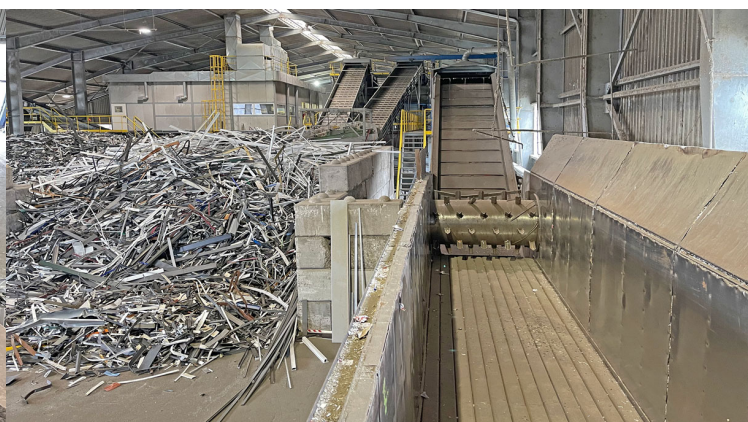
**Sorting plant, yoc 2009, extension 2015, capacity of 25,000 t/year, with TiTech Autosort 4, 10 sorting places, 150 t baler , with container loading station**

electrical and hydraulic circuit diagrams) are available exclusively in German.

An inspection of the plant is possible after sending the complete company data ("self-disclosure") of the prospective buyer and a subsequent credit check by arrangement. We accept no liability for the technical details or any errors.



**Sorting plant, yoc 2009, extension 2015, capacity of 25,000 t/year, with TiTech Autosort 4, 10 sorting places, 150 t baler , with container loading station**



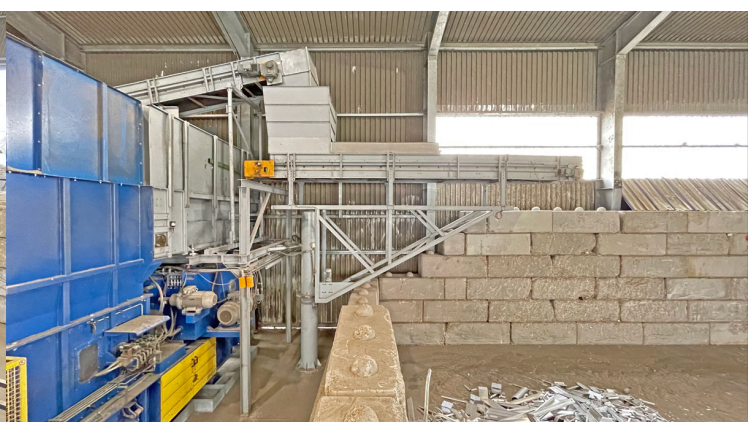
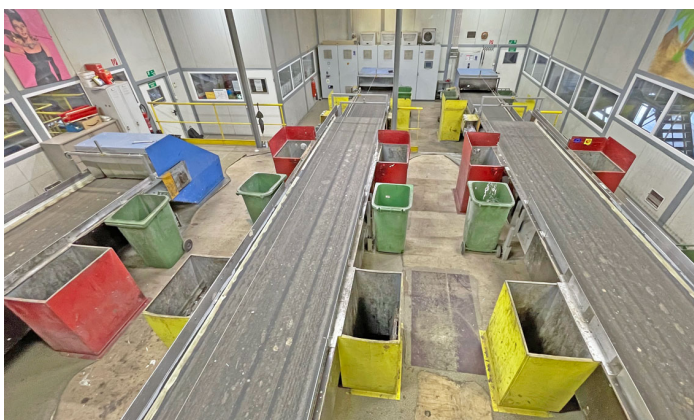
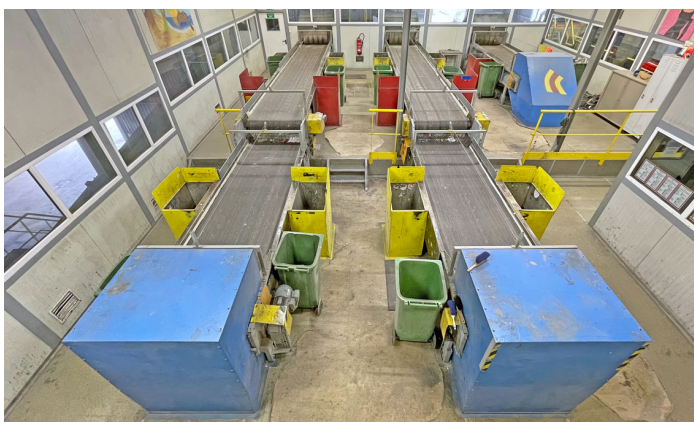


**Sorting plant, yoc 2009, extension 2015, capacity of 25,000 t/year, with TiTech Autosort 4, 10 sorting places, 150 t baler , with container loading station**





**Sorting plant, yoc 2009, extension 2015, capacity of 25,000 t/year, with TiTech Autosort 4, 10 sorting places, 150 t baler , with container loading station**





**Sorting plant, yoc 2009, extension 2015, capacity of 25,000 t/year, with TiTech Autosort 4, 10 sorting places, 150 t baler , with container loading station**

