

Cross Wrap bale opener line for RDF/MSW, paper, cardboard, type BO 4000, yoc 2015, only 674 bales were opened, opening time 45 seconds



It is a complete line for opening pressed bales made of RDF/MSW, paper, cardboard.

Technical data of the bale opener line:

Manufacturer Cross Wrap Oy Ltd, Siilinjärvi, Finland

Type BO 4000

Year of manufacture 2015

Quantity of opened bales 674 pieces

Operating time only 3 days, exclusively by running in the entire line during new installation

Opening time approx. 45 seconds per bale

Bale dimensions (W x H x L) 1100 x 1100 x 1400 - 1900 mm

Max. Bale weight 2,000 kg

Conveying height of the system 1,400 mm

Max. Conveying width of the system 1,200 mm

Material to be opened RDF/MSW

Availability of the line 98%

Noise level of the bale opener line 85 dB(A)

Total connected load 37 kW

Rated current 125 A

Operating display SIEMENS SIMATIC HMI Touch

Control SIEMENS S7 ET200S

Installation dimensions 8,463 x 2,890 x 3,960 mm (l x w x h)

Scope of delivery:

Feed conveyor 3,500 x 1,200 x 1,400 mm

Feed conveyor to opener 1,500 x 1,200 x 1,400 mm

Bale opener (gripper with knife)

Special equipment:

Cross Wrap bale opener line for RDF/MSW, paper, cardboard, type BO 4000, yoc 2015, only 674 bales were opened, opening time 45 seconds

Oil heating in hydraulic oil tank

Heating in control cabinet

Oil cooler in Hydraulic unit

Explanation of the short period of use:

The entire line of Cross Wrap bale openers type BO 4000 was installed at a municipal waste incineration plant in 2015. The background to the installation was that in the case of a malfunction or maintenance of the incinerator, the municipal waste could continue to be received, baled, wrapped and stored until the malfunction was cleared. Then the bales should all be opened again and the waste fed into the normal incineration process.

This worst-case scenario never came to pass. The plant was set up, run in and then never used in regular operation. Only during the commissioning and running-in of the entire plant in 2015 were 674 bales opened on three days. The plant is in very good condition and ready for operation immediately. Due to reconstruction measures in the incineration plant, the installation area of the bale opener was needed. As a result, the entire line is for sale.

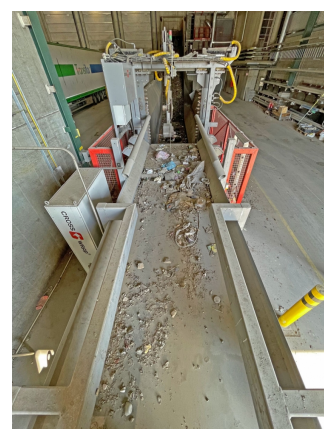
Short description of the wrapping process:

The pressed bales are placed on the infeed conveyor belt from the side or from behind by means of a forklift truck. For opening, the bales must run horizontally to the conveyor belt with the wire or twine binding, otherwise the bales must be turned 90° beforehand. The opening conveyor brings one bale at a time in front of the cutting unit. The grippers hold the wires or twine strapping. The front and rear rotating knives slit the bale lengthwise. Afterwards, the gripper returns to the starting position. The opened bale is now conveyed via the conveyor belt to the discharge chute and then falls onto the following conveyor system.

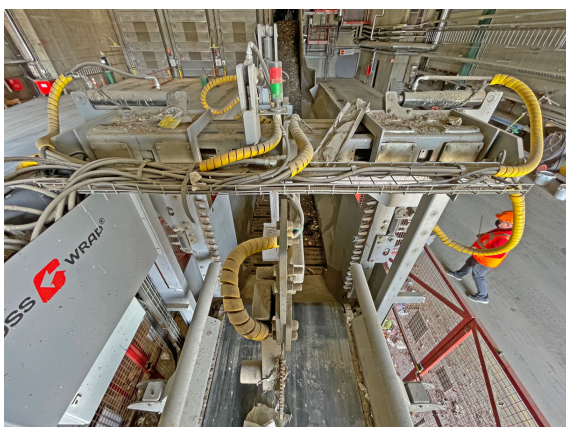
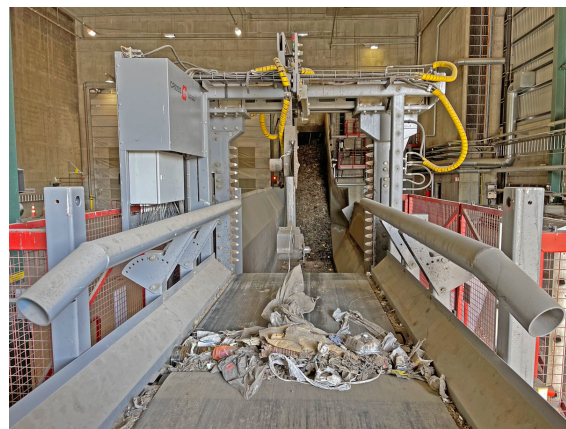
Comments:

New price of the completely plant 296.000,- €. The documentation (operating instructions, CE declaration, electrical/hydraulic circuit diagram) is complete. The unit has been dismantled into freight-manageable units, stored and is available for inspection and loading at short notice. We do not accept any liability for the technical details or any errors.

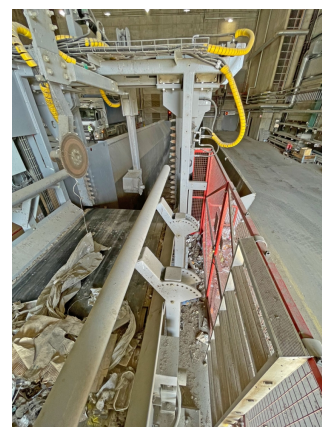
Cross Wrap bale opener line for RDF/MSW, paper, cardboard, type BO 4000, yoc 2015, only 674 bales were opened, opening time 45 seconds



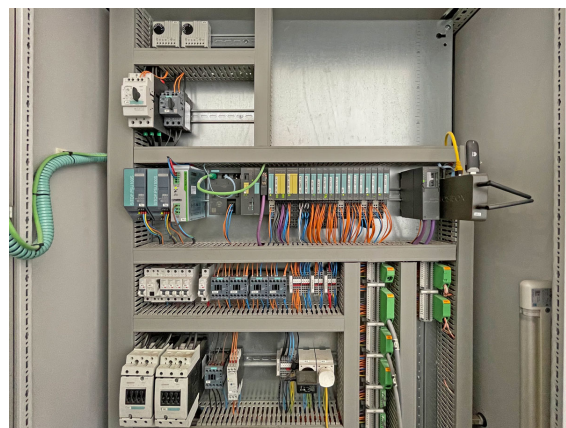
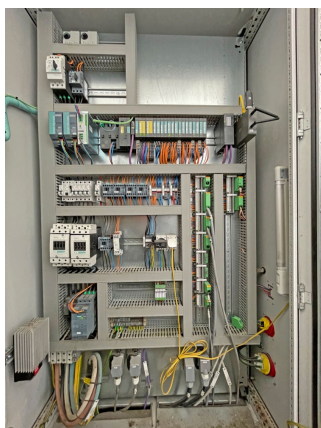
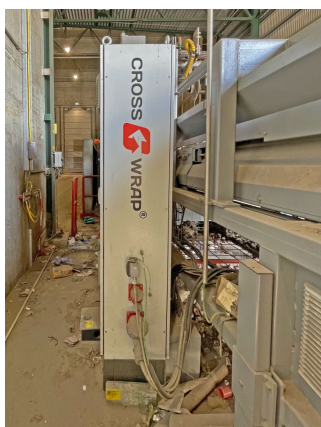
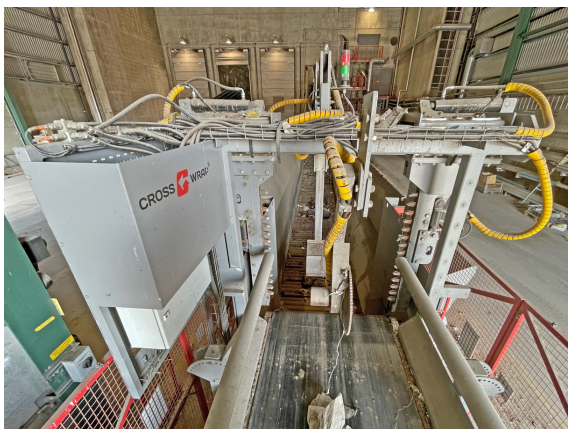
Cross Wrap bale opener line for RDF/MSW, paper, cardboard, type BO 4000, yoc 2015, only 674 bales were opened, opening time 45 seconds



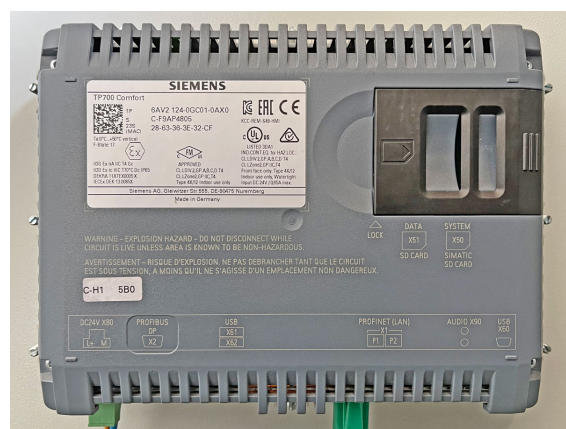
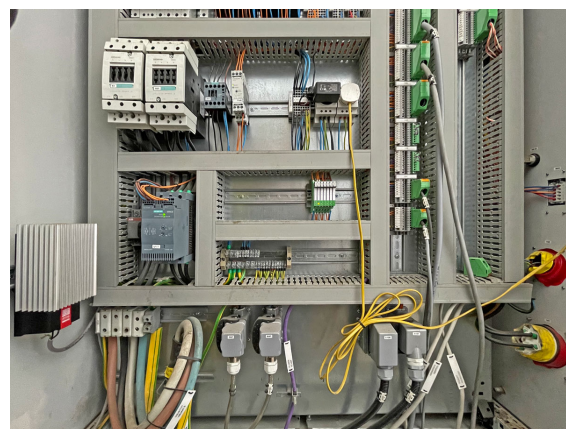
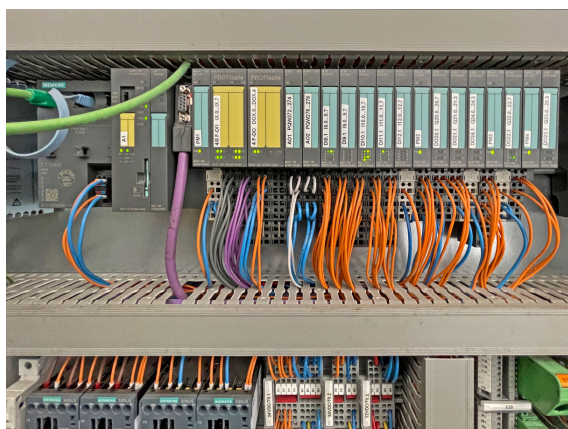
Cross Wrap bale opener line for RDF/MSW, paper, cardboard, type BO 4000, yoc 2015, only 674 bales were opened, opening time 45 seconds



Cross Wrap bale opener line for RDF/MSW, paper, cardboard, type BO 4000, yoc 2015, only 674 bales were opened, opening time 45 seconds



Cross Wrap bale opener line for RDF/MSW, paper, cardboard, type BO 4000, yoc 2015, only 674 bales were opened, opening time 45 seconds



Cross Wrap bale opener line for RDF/MSW, paper, cardboard, type BO 4000, yoc 2015, only 674 bales were opened, opening time 45 seconds

