

Cross Wrap bale opener line, for RDF, MSW, papier, cardboard, type DW 1400, yoc 2021, only 2 operating hours, throughput capacity up to 60 bales/h



For sale is an almost new bale opener line from a paper recycling plant for the production of 'fluff pulp' (long-fibre cellulose) from unmixed paper and cardboard production waste.

For sale is an almost new bale opener line from a paper recycling plant for the production of 'fluff pulp' (long-fibre cellulose) from unmixed paper and cardboard production waste.

The entire system was newly installed in 2021 and unfortunately never went into production. In 2024, the final decision was made to dismantle the entire system technology and sell parts of it.

The resulting bale opener line only ran for approx. 2 hours in set-up mode after installation and never went into production. The system was designed for a throughput of 20 tonnes of fluff pulp per hour.

Technical data on the used bale feed conveyor:

Manufacturer Bollegraaf Recycling Solutions B.V.

Type HBT 1400/1200 * 12500 - 0° (chain belt conveyor)

Overhaul of the conveyor belt in 2021

Operating hours after overhaul approx. 2 hours

Effective width 1200 mm

Belt length 10,150 mm

Drive power 3 kW, the belt speed of the motor can be regulated via a frequency converter

Belt speed 1.6 - 5.5 m/minute

Belt type 250/2, 3+1, thickness 6.1 mm, the belt is without carrier

Remark:

The bale feed conveyor (chain belt conveyor) is used. The original year of manufacture is not known. The conveyor was overhauled in 2021. After the overhaul and assembly, the conveyor belt has only been in operation in set-up mode for approx. 2 hours. The infeed conveyor serves as a supply store for the bale opener and dewiring unit and can store bales over a length of 10 metres. The chain belt conveyor is controlled via the DW 1400 cross wrap dewiring unit. Whenever a bale is opened, dewired and fed to the feed hopper, a new bale is automatically fed from the feed belt.

Cross Wrap bale opener line, for RDF, MSW, papier, cardboard, type DW 1400, yoc 2021, only 2 operating hours, throughput capacity up to 60 bales/h

Technical data for the bale opener and dewiring unit:

Manufacturer Cross Wrap OY
Type DW 1400 dewiring unit
Year of manufacture 2021 (new machine)
Operating hours approx. 2 hours (exclusively set-up operation by the manufacturer Cross Wrap)
Min./max. permitted bale dimensions:
Height min. 700 mm, max. 1400 mm
Width min. 700 mm, max. 1400 mm
Length min. 1100 mm, max. 2500 mm
Bale weights min. 250 kg, max. 2000 kg
Bale materials Paper, cardboard, plastic films, plastics, pulp and various other recycling materials
Throughput capacity up to 60 bales per hour, depending on material

Remark:

The bale opener and dewrapper is a new machine, built in 2021 and was operated exclusively by the manufacturer Cross Wrap for approx. 2 hours in set-up mode. The system works fully automatically. Bales are held on the infeed conveyor belt by two hydraulically operated grippers. The bale opener follows the contour of the bale and automatically cuts through the wrapping film and the steel or plastic bale wires with a hydraulically driven, rotating knife. The hydraulically driven gripper system holds the film with the steel or plastic bale wires and pulls them out sideways after the opening process. Finally, the wires and film are wound into small coils via a winding unit and ejected into a box via a side chute. Once the bale has been opened and the film and wire removed, it is discharged into the storage bunker with a dosing drum using a conveyor belt. It is then broken down into several pieces.

Technical data for the 'steel lamella conveyor' (steel plate conveyor), feed hopper with dosing drum:

Manufacturer Bollegraaf Recycling Solutions B.V.
Type Drumfeeder BDF 1200/2000*11000
Year of construction 2014, overhauled in 2021
Operating hours after overhaul approx. 2 hours (set-up operation only)
Drum width 2000 mm
Drum diameter 1360 mm
Drum drive power 15 kW
Rotation speed 40 - 70 revolutions/minute, controlled via a frequency converter
12 carriers on the drum, 80 mm high, 2000 mm long
Hardox ripper teeth, 48 pieces, 160 mm high
Steel slat conveyor belt (steel plate conveyor)
6" conveyor belt chain, breaking load 24,000 lbs
Hopper volume approx. 10,000 x 2,000 x 2,500 mm = 50 m³
Transport dimensions 11,500 x 2,600 x 3,075 mm (l x w x h)

Remark:

The feed hopper with dosing drum (drumfeeder) is used, built in 2014 and was overhauled in 2021. After the overhaul and assembly, the conveyor belt has only been in operation for approx. 2 hours in set-up mode.

Scope of delivery:

1 piece used bale feeding conveyor (chain belt conveyor), manufacturer Bollegraaf, type HBT 1400/1200 * 12500 - 0°, without further documentation
1 piece bale opener and dewiring unit as good as new, manufacturer Cross Wrap OY, type DW 1400 dewiring unit, year of manufacture 2021, with operating instructions, CE declaration, drawing, electrical and hydraulic diagrams
1 piece feed hopper 'steel lamella conveyor' with dosing drum, manufacturer Bollegraaf, type drum feeder BDF 1200/2000*11000, with operating instructions and drawing

Comments:

Inspections are possible after agreement. We will not assume liability for the given technical data

**Cross Wrap bale opener line, for RDF, MSW, papier, cardboard, type DW 1400, yoc
2021, only 2 operationg hours, throughput capacity up to 60 bales/h**

and possible errors.

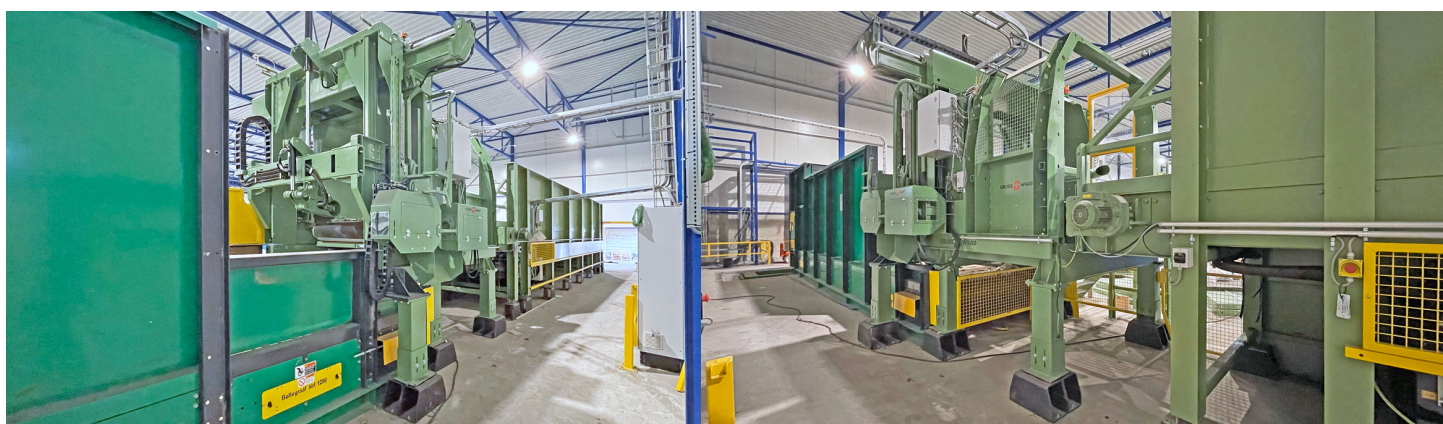
Cross Wrap bale opener line, for RDF, MSW, papier, cardboard, type DW 1400, yoc 2021, only 2 operating hours, throughput capacity up to 60 bales/h



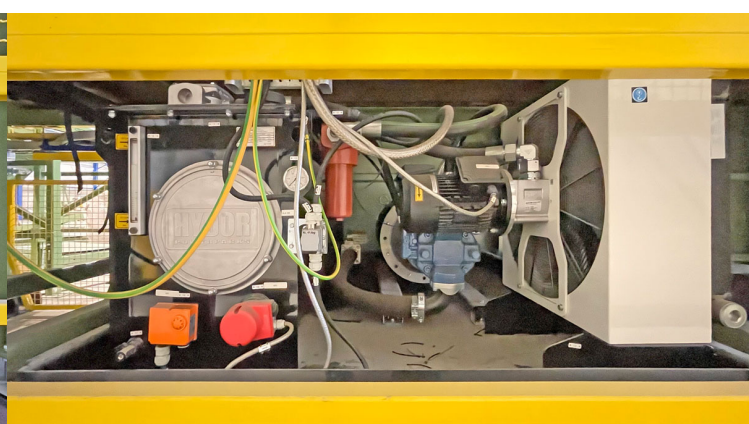
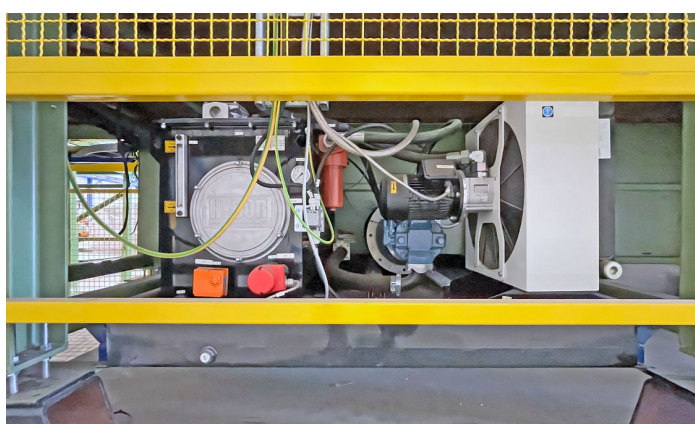
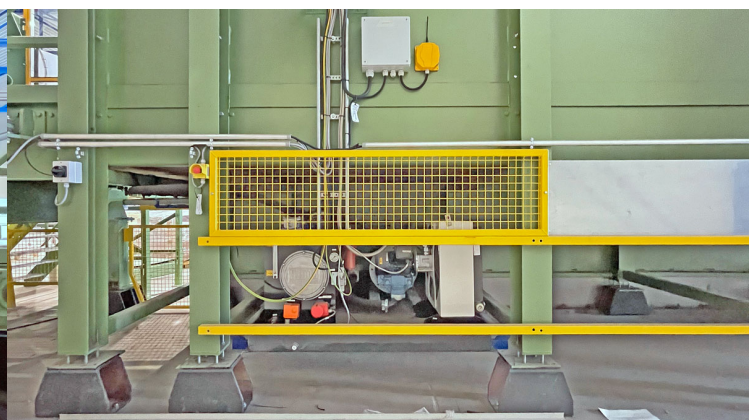
Cross Wrap bale opener line, for RDF, MSW, papier, cardboard, type DW 1400, yoc 2021, only 2 operating hours, throughput capacity up to 60 bales/h



Cross Wrap bale opener line, for RDF, MSW, papier, cardboard, type DW 1400, yoc 2021, only 2 operating hours, throughput capacity up to 60 bales/h



Cross Wrap bale opener line, for RDF, MSW, papier, cardboard, type DW 1400, yoc 2021, only 2 operating hours, throughput capacity up to 60 bales/h



Cross Wrap bale opener line, for RDF, MSW, papier, cardboard, type DW 1400, yoc 2021, only 2 operating hours, throughput capacity up to 60 bales/h



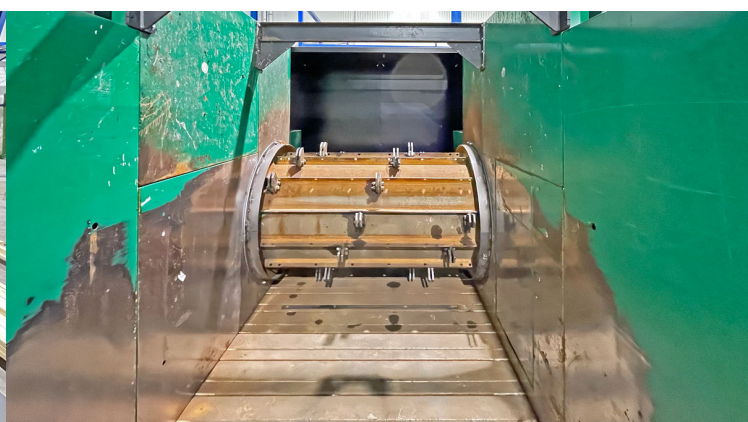
Cross Wrap bale opener line, for RDF, MSW, papier, cardboard, type DW 1400, yoc 2021, only 2 operating hours, throughput capacity up to 60 bales/h



Cross Wrap bale opener line, for RDF, MSW, papier, cardboard, type DW 1400, yoc 2021, only 2 operating hours, throughput capacity up to 60 bales/h



Cross Wrap bale opener line, for RDF, MSW, papier, cardboard, type DW 1400, yoc 2021, only 2 operating hours, throughput capacity up to 60 bales/h



Cross Wrap bale opener line, for RDF, MSW, papier, cardboard, type DW 1400, yoc 2021, only 2 operating hours, throughput capacity up to 60 bales/h

